



D E N T A L   I M P L A N T   S Y S T E M

MADE IN ITALY

SINCE 1977

WE HAVE BEEN HELPING DENTISTS  
TO MAKE THEIR PATIENTS SMILE



**DENTALTECHITALIA.COM**

 **MADE IN**  **ITALY**



## DEVOTION = RESULTS



**100%**  
of our activity  
is dedicated **to you**



**98,6**  
documented  
**C.S.R.**



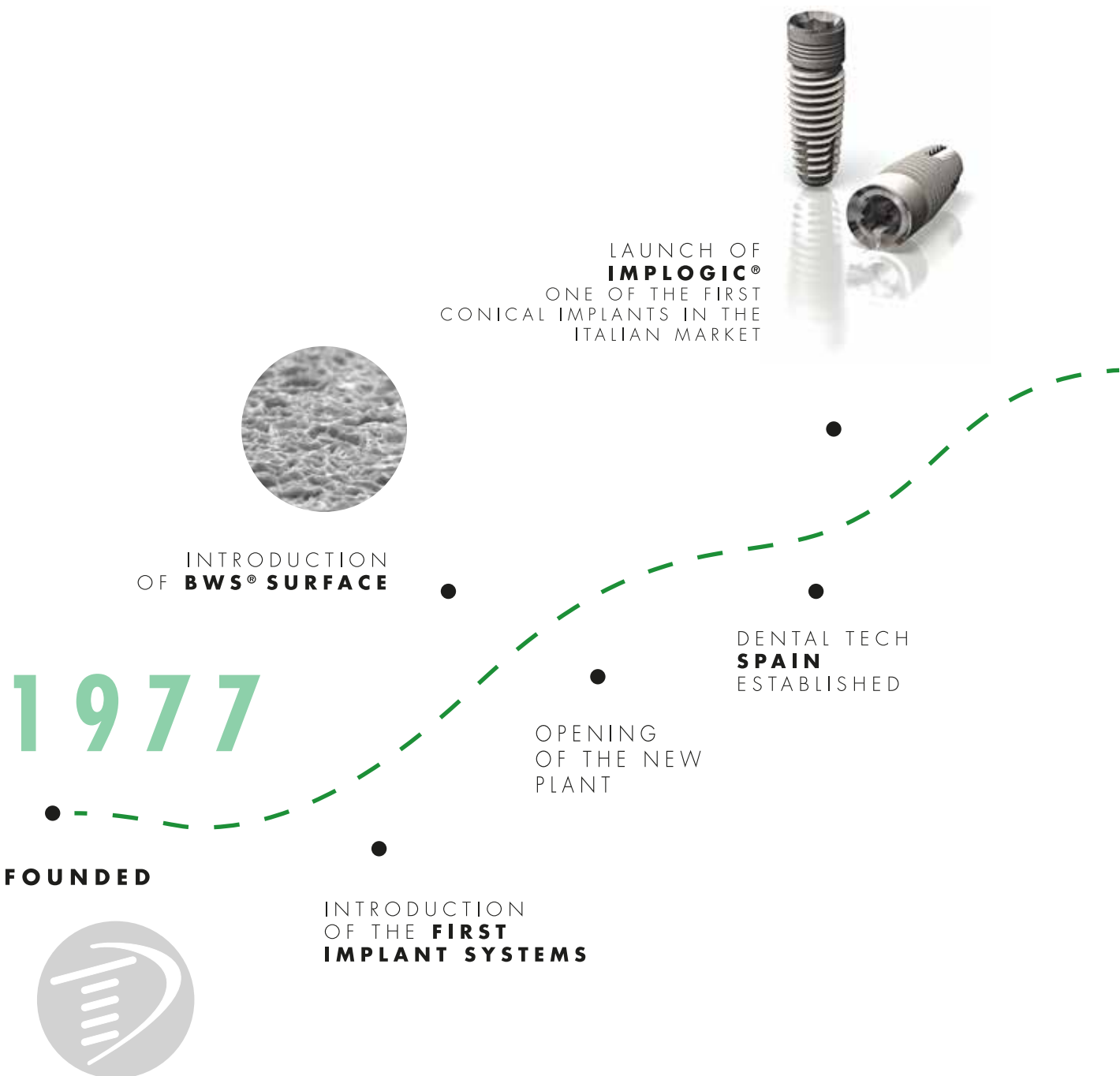
**12%**  
of our revenue invested  
in **research**

## A LONG ROAD DEDICATED TO IMPLANTOLOGY

With over 35 years of experience manufacturing implantable medical devices, **Dental Tech** has become a brand synonymous with quality and reliability.

Our primary aim is to provide users simple and innovative certified solutions, featuring high quality and at the right price.

We are highly research oriented, to offer professionals and their patients the best solutions.



# TODAY

NEW PACKAGING  
**NEW IMPLANT  
LINES**  
IMPLOGIC® AT  
IMPLOGIC® GII  
IMPLASSIC FT2 SHORT



MARKET  
INTRODUCTION OF  
**THE IMPLASSIC FT2  
IMPLANT LINE**  
THREE DIAMETERS, UNIQUE  
PROSTHETIC PLATFORM.  
ONE REDUCED DIAMETER  
WITH PROSTHETIC  
PLATFORM DEDICATED

MARKET LAUNCH OF  
PROSTHETIC  
LINE FOR DIGITAL  
**TECHNIQUE (CAD-CAM)**



MARKET LAUNCH OF  
THE **IMPLASSIC HX2  
IMPLANT LINE**  
EXTERNAL CONNECTION  
SYSTEM, EASY AND  
FLEXIBLE



ALWAYS  
AT THE SERVICE  
OF OUR CUSTOMERS

# DENTAL TECH

## IMPLANT LINE



Objective: To provide a safe and versatile implant line.

The wide range of products satisfies the needs of professionals

---

## ImpLogic® GII

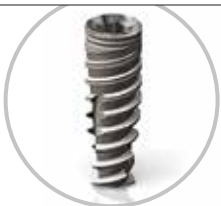


It is the Implogic evolution end it has a conical shape, with three progressively cutting zones that induce a significant capacity of penetration and at the same time provides for collection of bone chips reducing the bone compression. Implogic GII is particularly indicated in cases where it is necessary to safeguard structures anatomic as the maxillary sinus and alveolar nerve.



---

## ImpLogic® AT (Active Thread)



It is a tapered implant, thanks to its special spiral design, facilitates the users in the realization of Ridge expansion procedures. The exceptional self tapping power of the thread, provides an excellent bone condensing and a high primary stability even in very complex clinical cases. Implogic AT is recommended in cases of post extraction implants and in case of poor quality bone.



Fixture of cylindrical body and a conical apex, modulating the surgical procedure, it is indicated in all bone types, even in the case of noncompact bone it is able to achieve a good primary stability. The external hexagon connection makes it particularly suitable for Full Arch prostheses on Fixture and screwed prostheses in general.



---

## ImpLassic HX2



Small diameter implant, designed to be inserted in the intra-foraminal area of the jaw, with flapless technique, it is indicated for the immediate stabilization of dentures.



---

## Logic Sphero



---

## ImpLassic TR



Fixture of cylindrical body and a conical apex, modulating the surgical procedure, it is indicated in all bone types, even in the case of non-compact bone it is able to achieve a good primary stability. The implant is equipped with a transgingival collar that makes it particularly suitable for the monophasic technique where there are no special aesthetic requirements. The Morse taper connection with anti-rotational octagon, combines the advantages of the conical seal with those interior engaging structures, giving both biological and mechanical stability to the prosthetic components facilitating the work of the prosthodontist and dental technician.



Fixture of cylindrical body and a conical apex, modulating the surgical procedure, it is indicated in all bone types, even in the case of non-compact bone it is able to achieve a good primary stability. You can use it for any type of prosthetic restoration, screwed and cemented, and using the concept of platform switching allows you to better manage the soft tissue in the area of the implant – abutment interface, and reduce peri-implant bone resorption over time.



---

## ImpLassic FT2

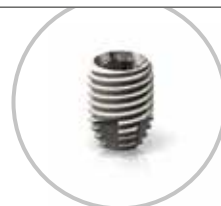


It has the same characteristics the ImpLassic FT2 of greater length. Even if they are only 6.0 and 7.0 mm length, allows the realization of surgical procedures without bone graft even in cases of advanced tissue resorption.



---

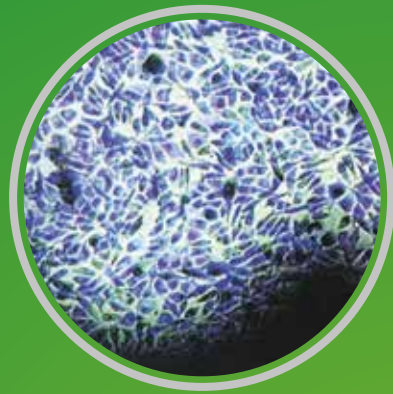
## ImpLassic FT2 SHORT



**BWS®**

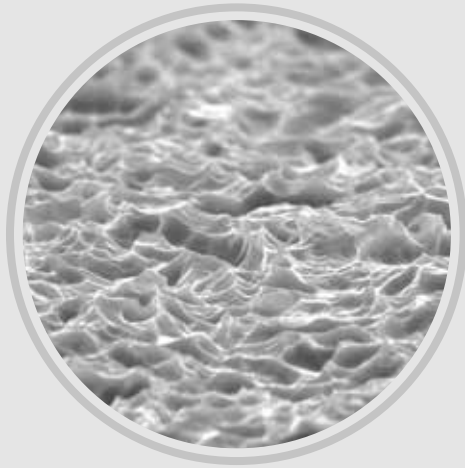
a surface with  
over 20 years of history

**COSTANT OVER TIME**



The capacity of BWS® to retain fibrin, lets osteoblasts migrate from the bone to the implant surface, and reproduce there, generating new bone in direct contact with the titanium (contact osseointegration).

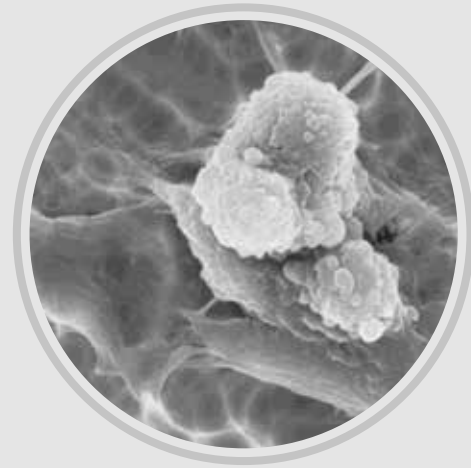




20 µm

SEM HV: 20.00 kV      WD: 10.6470 mm  
SEM MAG: 4.82 kx      Det: SE Detector  
Date(m/d/y): 08/04/08      View field: 62.05 µm

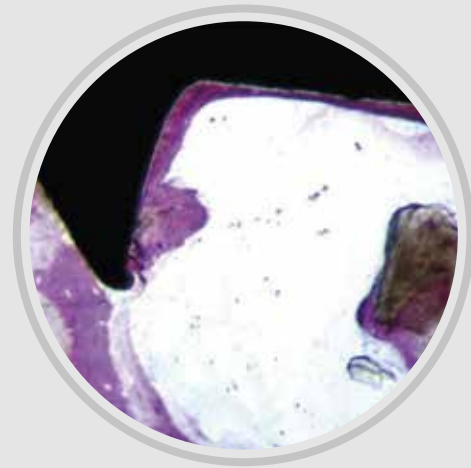
VEGA\TESCAN Dental Tech



2µm

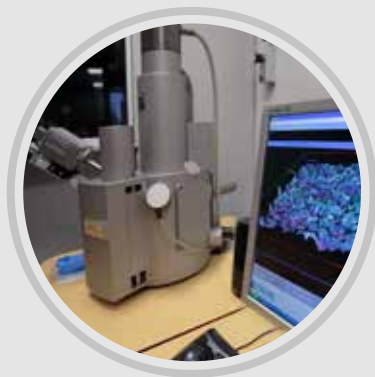
EHT=18.00 kV    WD=13 mm    Mag=6.50 K X  
Photo No.=6159    Detector= SE1

The process of sandblasting and acid etching the implant surface makes it possible to obtain optimal values of roughness creating the strongest fibrin adhesion to the surface and facilitating the bone healing process by significantly reducing the time.



After the surface treatment and the classic washings, Dental Tech implants are additionally cleaned with **Argon Cold Plasma** to minimize carbon contamination.

Subsequently, minute controls are performed on the fixture with **scanning electron microscopes (SEM)**.



✔  
Packaging in controlled environments

✔  
Clean room ISO 7

✔  
Packaging impermeable to micro-organisms

✔  
Gamma ray sterilisation process guarantee the creation of products that are extremely safe for users and their patients

# ASSISTANCE AND SERVICE

A team of experts and highly professional sales force assist clinicians with their daily requirements. Together with clinical specialists we train customers to use our implant system and organize advanced courses suitable for implementing the clinical performance of the participants.



**DENTALTECHITALIA.COM**

MADE IN ITALY

**DENTAL TECH SRL**

Via G. Di Vittorio, 10/12 | 20826 Misinto (MB), Italy  
Tel. + 39 02 967.20.218 | [\*\*info@dental-tech.it\*\*](mailto:info@dental-tech.it)



IST ENG  
2017/0